

DOC.JOHNSON[®]

OptiMALE[™]

Men's Sexual Health + Wellness

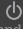

P-Curve
Multi-Function • Rechargeable
Wireless • Silicone



Instruction Manual

OPERATING INSTRUCTIONS

To Operate P-Curve:

- **To power on/off** } Press and hold  button until LED begins to flash. Press and hold until LED goes out to power off.
- **To cycle through vibrating functions using the power button** } Press  without holding.
- **To cycle through vibrating functions using the remote control** } Press button on remote without holding.
- Power button LED on the P-Curve will flash and intensify with different vibration patterns. **Pressing and holding remote button will pause vibration without powering off massager.**

To Charge P-Curve:

- Plug wide USB end of charger into a USB power source, and insert charger into the small port on rear base. LED flashes while properly connected and charging, and displays a solid light when charging is complete. **Charging Time: 2 hours**
Usage Time: 2 hours

CARE INSTRUCTIONS

To clean, spray with Doc Johnson[®] Toy Cleaner or wash with a mild soap and warm water. Allow to dry completely before storing separately from other toys in a cool, dry place. Use with water-based lubricant/glide.

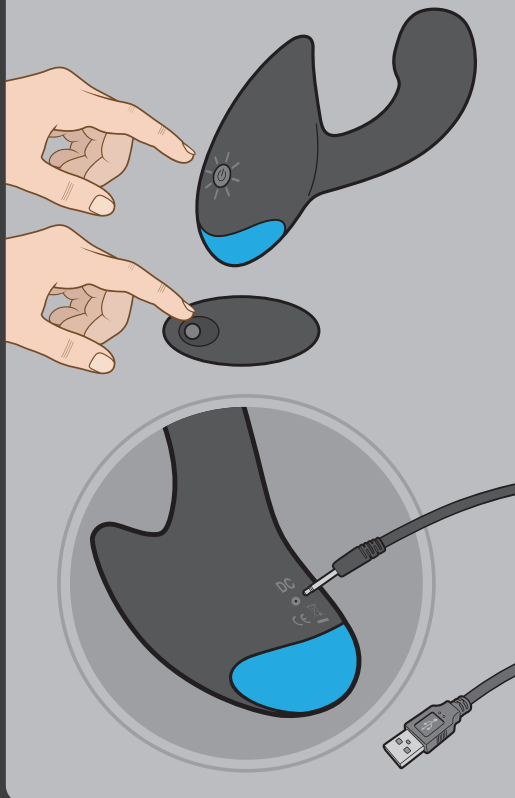
*Doc Johnson[®] Toy Cleaner sold separately.

Approximate Product Dimensions:

Prostate Massager Total Length: 5.5" (13.97 cm)
Insertable Length: 3.5" (8.89 cm)
Width: 1.25" (3.18 cm)
Circumference: 4" (10.16 cm)

Warning for Vibrating Products: To avoid injury or aggravation of pre-existing conditions, this product should not be used on swollen or inflamed areas or skin lacerations. No medical claims are warranted or implied by the use of this product.

For warranty information and product registration, go to **DOCJOHNSON.COM**



Socialize
with the Doc
www.docjohnson.com/social-media

DOCJOHNSON[®].com

KIN-0691-12