

A PLAY



EXPANDER

Rechargeable Silicone Anal Plug with Wireless Remote


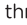
Care and Usage Instructions

A-Play Expander is an anal plug crafted in premium silicone designed to conveniently recharge with the included USB Cable.

The Expander has a wide base for safe, comfortable use and can be used with its included remote control.

Expanding


► **On the EXPANDER:**

1. **Press and hold**  for 3 seconds until LED button lights up.
2. **Press**  again to cycle through the 12 expanding speeds.

► **On the Wireless Remote:**



3. After completing step 1, **press**  to turn on and change expanding speed.

► **After Use:**


- On the remote, press and hold*  for 3 seconds to stop expanding temporarily.
On the EXPANDER, press and hold  for 3 seconds until light disappears.

Vibrating



► **On the EXPANDER:**

1. **Press and hold**  for 3 seconds until LED button lights up.
2. **Press**  again to cycle through 10 vibrating functions.

► **On the Wireless Remote:**

3. After completing step 1, **press**  to turn on and change vibration pattern.

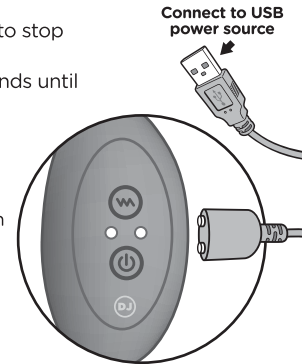
► **After Use:**

- On the remote, press and hold*  for 3 seconds to stop vibrations temporarily.
On the EXPANDER, press and hold  for 3 seconds until light disappears.

To Charge the EXPANDER

Plug the included cable into a USB power source, then locate the magnetic charging port on the Expander and touch the magnetic ends of the cable to the port.

Charge time: 120 minutes Usage time: 40 minutes



Cleaning and Storage

Spray your A-Play EXPANDER with Doc Johnson Toy Cleaner or wash with mild soap and warm water. Allow to air-dry completely before storing separately from other toys in a cool, dry place. Use with water-based lubricant/glide. Doc Johnson Toy Cleaner sold separately.

Warning for Vibrating Products: To avoid injury or aggravation of pre-existing conditions, this product should not be used on swollen or inflamed areas or skin lacerations. No medical claims are warranted or implied by the use of this product.

Wireless Remote uses 1 AAA battery (not included)
Maximum range: 16 ft. (5 meters)



Waterproof



120 Unique
Sensations



USB
Rechargeable



Silicone



Phthalate-Free,
Body-Safe



ABS
Plastic



**Socialize
with the Doc**
www.docjohnson.com/social-media



FCCID: 2AVQJ-VAS12011

This equipment has been tested and found to comply with the limits for a Class B digital device, pursuant to Part 15 of the FCC Rules. These limits are designed to provide reasonable protection against harmful interference in a residential installation. This equipment generates uses and can radiate radio frequency energy and, if not installed and used in accordance with the instructions, may cause harmful interference to radio communications. However, there is no guarantee the interference will not occur in a particular installation. If this equipment does cause harmful interference to radio or television reception, which can be determined by turning the equipment off and on the user is encouraged to try to correct the interference by one or more of the following measures:

- Recipient or relocate the receiving antenna.
- Increase the separation between the equipment and receiver.
- Connect the equipment into an outlet on a circuit different from that to which the receiver is connected.
- Consult the dealer or an experienced radio/TV technician for help. This device complies with part 15 of the FCC Rules. Operation is subject to the following two conditions: (1) This device may not cause harmful interference, and (2) this device must accept any interference received, including interference that may cause undesired operation. Changes or modifications not expressly approved by the party responsible for compliance could void the user's authority to operate the equipment.

INS-030015

Copyright © 2021 Doc Johnson Enterprises.



DOCJOHNSON.com