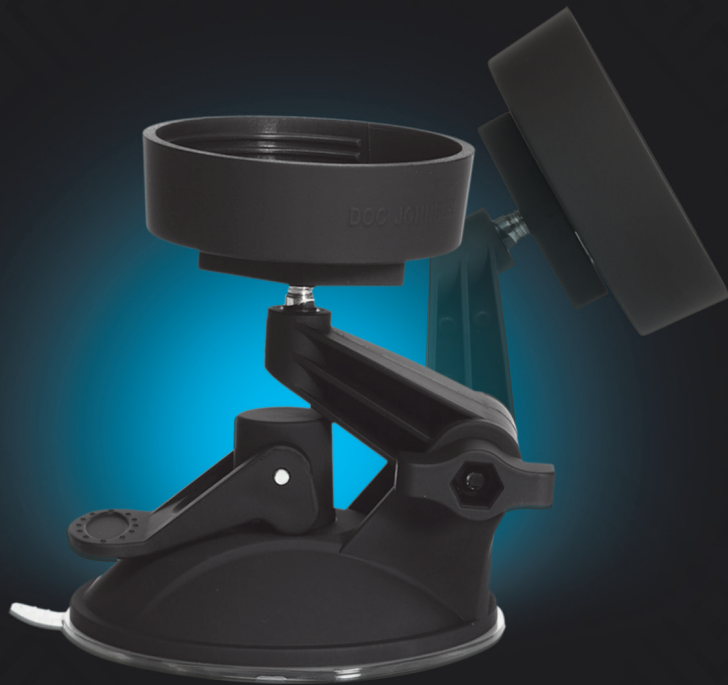


DOC JOHNSON®

OptiMALE™

Men's Sexual Health + Wellness



Suction Cup Accessory Instructions for Use

with the
OptiMALE™ Endurance Trainer™
ULTRASKYN™ Stroker

Assembly: Remove end cap from the base of your Doc Johnson® OptiMALE™ Endurance Trainer™ ULTRASKYN™ Stroker (sold separately). Attach stroker to suction cup adapter by twisting it into the cap on the adapter.

Usage: To attach your extra-strength suction cup to a surface for use, lift the locking lever to an upright position, press the cup firmly onto a smooth, nonporous surface, and pull the locking lever all the way down. Loosen the wing nut at the side to adjust stroker height and angle, and tighten to lock it into position.



Troubleshooting: If suction cup does not adhere, ensure that the intended surface is completely smooth and nonporous, clean the suction cup and surface with rubbing alcohol, and reattempt. Moistening suction cup and surface can also improve adhesion.

Care and Maintenance: To clean, spray with Doc Johnson® Toy Cleaner* or wash with mild soap and warm water. Allow to dry completely before storing in a cool, dry place.

*Doc Johnson® Toy Cleaner sold separately.

KIN-0693-26